

# Force Field Explorer

**Graphical User Interface for TINKER**  
**Version 8.7**  
**June 2019**

Copyright © 1990-2019  
by Michael J. Schnieders & Jay William Ponder  
All Rights Reserved

User's Guide Cover Illustration by Pengyu Ren

FORCE FIELD EXPLORER IS PROVIDED "AS IS" AND WITHOUT ANY WARRANTY EXPRESS OR IMPLIED. THE USER ASSUMES ALL RISKS OF USING THIS SOFTWARE. THERE IS NO CLAIM OF THE MERCHANTABILITY OR FITNESS FOR A PARTICULAR PURPOSE.

YOU MAY MAKE COPIES OF TINKER FOR YOUR OWN USE, AND MODIFY THOSE COPIES. YOU MAY NOT DISTRIBUTE ANY MODIFIED SOURCE CODE OR DOCUMENTATION TO USERS AT ANY SITE OTHER THAN YOUR OWN.

V8.7 06/19

# Table of Contents

<b>Introduction .....</b>	<b>6</b>
<b>Current Release .....</b>	<b>6</b>
<b>Future Plans .....</b>	<b>6</b>
<b>Installation .....</b>	<b>7</b>
• <b>Linux .....</b>	<b>7</b>
• <b>Macintosh OS X .....</b>	<b>7</b>
• <b>Microsoft Windows .....</b>	<b>7</b>
<b>Description of Force Field Explorer Components .....</b>	<b>8</b>
➤ <b>Molecular Tree .....</b>	<b>8</b>
➤ <b>3D Graphics and Global Axis .....</b>	<b>9</b>
➤ <b>Keyword Editor .....</b>	<b>10</b>
➤ <b>Modeling Commands .....</b>	<b>11</b>
➤ <b>Logs .....</b>	<b>12</b>
<b>Description of Force Field Explorer Menus .....</b>	<b>14</b>
➤ <b>File .....</b>	<b>14</b>
♦ <b>Open .....</b>	<b>14</b>
♦ <b>Save As .....</b>	<b>14</b>
♦ <b>Close .....</b>	<b>14</b>
♦ <b>Close All .....</b>	<b>14</b>
♦ <b>Download from PDB .....</b>	<b>14</b>
♦ <b>Load Restart Data .....</b>	<b>14</b>
♦ <b>Load Induced Data .....</b>	<b>14</b>
♦ <b>Exit .....</b>	<b>14</b>
➤ <b>Selection .....</b>	<b>14</b>
♦ <b>Select All .....</b>	<b>15</b>
♦ <b>Restrict to Selections .....</b>	<b>15</b>
♦ <b>Highlight Selections .....</b>	<b>15</b>
♦ <b>Set Selection Color .....</b>	<b>15</b>
♦ <b>Label Selected Atoms .....</b>	<b>15</b>
♦ <b>Label Selected Residues .....</b>	<b>15</b>
♦ <b>Set Label Font Size .....</b>	<b>15</b>
♦ <b>Set Label Font Color .....</b>	<b>15</b>
➤ <b>Display .....</b>	<b>15</b>
♦ <b>Wireframe .....</b>	<b>15</b>
♦ <b>Tube .....</b>	<b>16</b>
♦ <b>Spacefill .....</b>	<b>16</b>
♦ <b>Ball &amp; Stick .....</b>	<b>16</b>
♦ <b>Invisible .....</b>	<b>16</b>
♦ <b>RMIN .....</b>	<b>16</b>
♦ <b>Fill .....</b>	<b>16</b>
♦ <b>Points .....</b>	<b>16</b>

◆	Lines .....	16
◆	Preferences – Radius .....	16
◆	Preferences – Wireframe Thickness .....	16
◆	Preferences – Detail .....	16
➤	<b>Color</b> .....	16
◆	Monochrome .....	16
◆	CPK .....	16
◆	Residue .....	16
◆	Structure .....	16
◆	Polymer .....	17
◆	Partial Charge .....	17
◆	Vector Magnitude .....	17
◆	User Color .....	17
◆	Apply User Color to Selections .....	17
◆	Set User Color .....	17
➤	<b>Options</b> .....	17
◆	Active System .....	17
◆	Drag .....	17
◆	Reset Global Zoom .....	18
◆	Reset Global Translation .....	18
◆	Reset Global Rotation .....	18
◆	Reset Global View .....	18
◆	Toggle Hydrogens .....	18
◆	Full Screen .....	18
◆	Set Background Color .....	18
➤	<b>Picking</b> .....	18
◆	Graphics Picking .....	18
◆	Set Graphics Picking Color .....	19
➤	<b>Trajectory</b> .....	19
◆	Oscillate .....	19
◆	Frame .....	19
◆	Speed .....	19
◆	Skip .....	19
◆	Play .....	19
◆	Stop .....	19
◆	Step Forward .....	19
◆	Step Back .....	19
◆	Reset .....	20
➤	<b>Simulation</b> .....	20
◆	Release Job .....	20
◆	Connect to Local Job .....	20
◆	Connect to Remote Job .....	20
◆	Set Remote Job Address .....	20
➤	<b>Export</b> .....	20

♦	Capture Graphics.....	20
♦	PNG .....	20
♦	JPEG .....	20
➤	<b>Window</b> .....	20
♦	Reset Panes .....	21
♦	Show Tree.....	21
♦	Show Tool Bar .....	21
♦	Show Global Axes.....	21
♦	Show Console.....	21
♦	Java Metal Look & Feel .....	21
♦	Windows/Macintosh/Motif Look & Feel .....	21
➤	<b>Help</b> .....	21
♦	About .....	21
	<b>Acknowledgments</b> .....	22
	<b>Reporting Bugs</b> .....	22

## Introduction

Force Field Explorer is a graphical user interface to the Tinker suite of molecular modeling tools. The goal is to create a robust environment for computational chemistry and molecular engineering applications. Current features include:

- Setup and real-time visualization of modeling routines, including local/global optimizations, sampling methods, superposition etc.
- Basic 3D molecular visualization (wireframe, spacefilling, ball & stick, etc) with special features for force field specific parameters such as Lennard-Jones radii and partial charge magnitudes.
- A comprehensive editor for Tinker keyword files, which contain parameters that control modeling algorithms.
- Tinker trajectory playback.

## Current Release

The current release of Force Field Explorer is denoted as Version 8.7 and dated July 2019 to mirror the corresponding Tinker version. Dependencies, listed below, are now included in self-extracting installers for Linux, MacOS and Microsoft Windows.

1. Tinker version 8.7
2. Java Runtime Environment (JRE) 1.8 (Java 8) or later
3. Java3D version 1.6

Major improvements over the 2nd release include:

- Self-Extracting Installers for Linux, MacOS and Microsoft Windows. These distributions include Tinker binaries, source code, documentation, and example files. Private JRE and Java3D libraries are bundled with all versions of FFE.
- An intuitive, consistent selection mechanism.
- Improved keyword and modeling panels.
- Support for Tinker internal coordinate, restart and induced dipole file formats, plus loading of Protein Databank files directly from the PDB or from disk. Conversion of PDB files to Tinker format (with automatic atom typing for many biomolecules) is also supported.

## Future Plans

The most important Force Field Explorer development goal is to add further molecular editing and visualization features. We use Java3D as the graphics toolkit underlying FFE. Java3D was originally developed by Sun, but is now maintained by an open source consortium and is freely available. Other goals include support for other file types and special capabilities for molecular complexes, docking and binding.

## Installation

Tinker and Force Field Explorer are now being distributed within self-extracting installers for Linux, Apple MacOS and Microsoft Windows. Included are binary Tinkr executables, source code, example/test files, documentation and the Java environment needed by Force Field Explorer. FFE contains a private JRE version that will not affect any other JREs installed system wide.

For each platform, a launch script/exe located in the top level installation directory named “ffe” will launch Force Field Explorer.

On some platforms, double clicking the ffe.jar file in the “tinker/jar” directory will also launch Force Field Explorer. In this case, your system JRE will be invoked instead of the private JRE bundled with the installation kit. This is fine, as long as your system JRE is a 1.8 version (Java 8) and includes Java3D extensions.

- **Linux**

After downloading the installer, execute it from a shell window. A script to run Force Field Explorer is located in the top level installation directory, which defaults to “\$HOME/Tinker-FFE”. In this case, Tinker binaries would be located in the “\$HOME/Tinker-FFE/tinker/bin” directory.

- **Apple MacOS**

After downloading the installer, double click to start installation. Force Field Explorer can then be launched by double clicking on the Desktop icon.

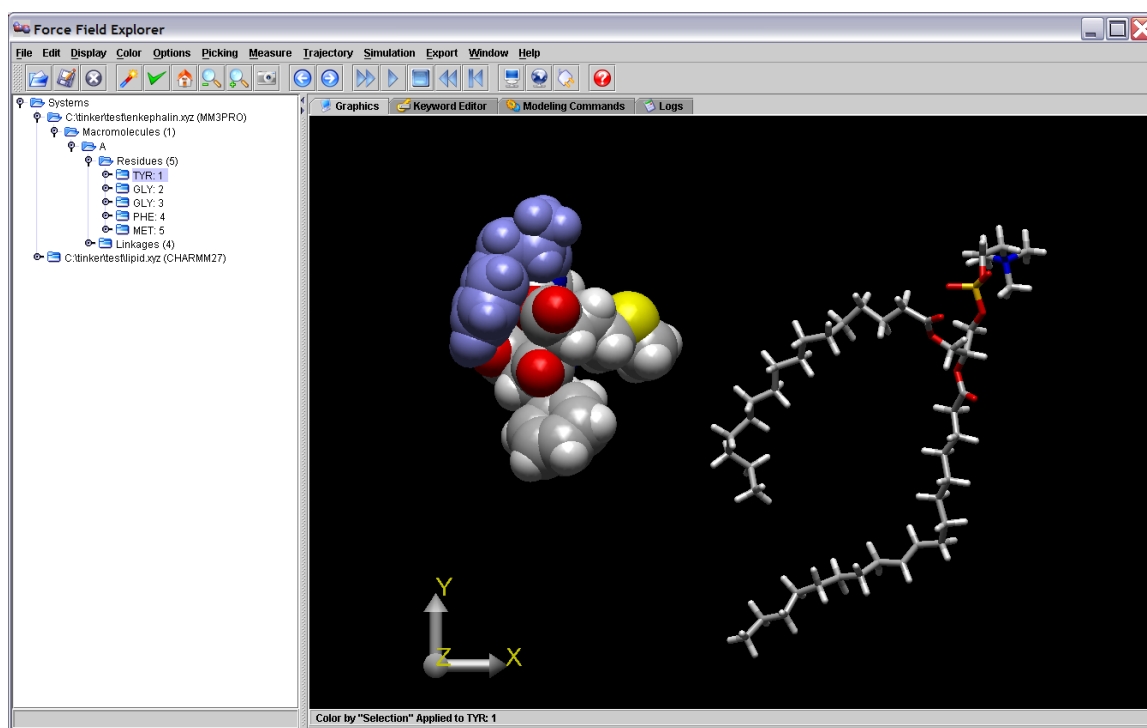
- **Microsoft Windows**

After downloading the installer, double click to start installation. Force Field Explorer can then be launched from an icon or the Start Menu.

## Description of Force Field Explorer Components

### ➤ Molecular Tree

The Molecular Tree is a structural hierarchy of each system, used for navigating and making selections. When Force Field Explorer opens a structure file, it attempts to group atoms into protein/nucleic acid macromolecules and their constituent residues. It also groups ions, water and hetero molecules together. This is done even in the absence of a Tinker sequence file. When a display or color command is chosen, all currently selected groups of atoms are affected.

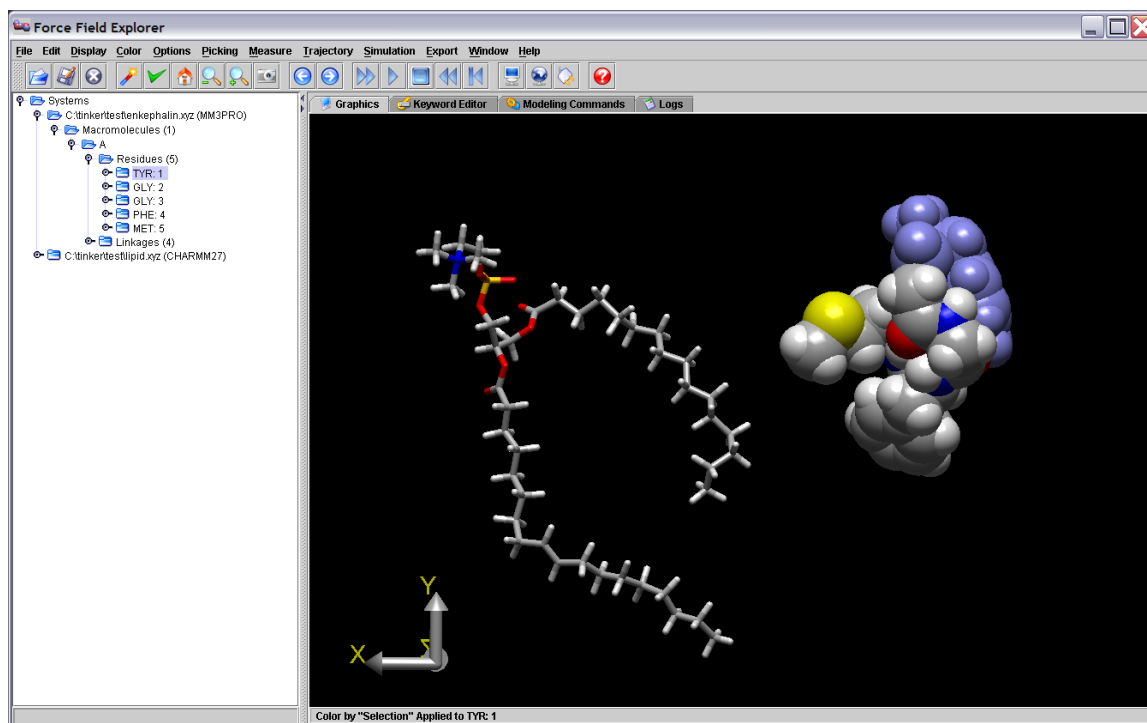


**Figure 1.** The first residue of enkephalin has been selected in the Tree view and is highlighted blue in the graphics window.



### ➤ 3D Graphics and Global Axis

Left-clicking the Global Axis, then dragging performs a rotation about the origin of the entire scene. This is useful for manual docking of two systems. For example, after positioning each system individually in the X-Y plane by dragging them with the mouse, a rotation about the Y-axis allows orientation in the Y-Z plane. Right-clicking the Global Axis, then dragging performs a translation of the entire scene.



**Figure 2.** Dragging the Graphics Axis causes the entire scene to rotate about the global origin. The scene above has been rotated 180 degrees around the Y-axis.

## ➤ Keyword Editor

The Keyword Editor allows modification of keyword files that control various aspects of Tinker calculations. If a Modeling Command is executed on a system, the corresponding Keyword File is automatically saved. Modifications can also be saved at any time using one of the save buttons. Any text or keywords that Force Field Explorer does not recognize are considered “Comments” and are appended to the end of saved key files. As an example, the enkephalin keyword control file is shown below.

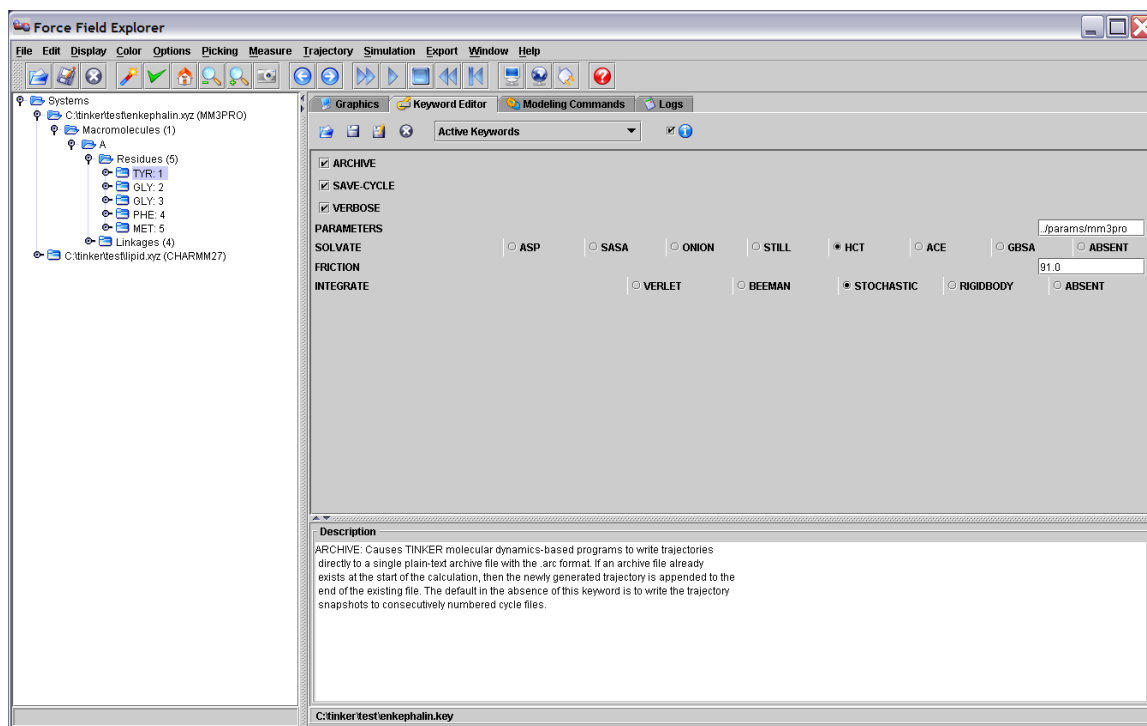
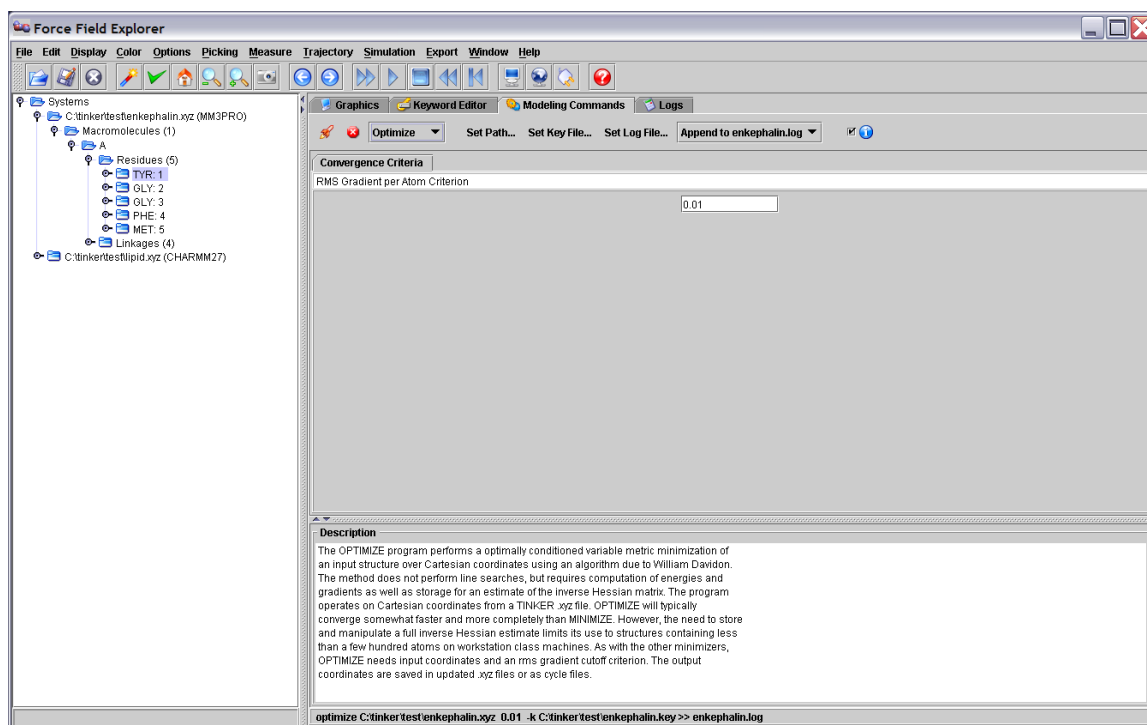


Figure 3. The Keyword Editor is displaying the enkephalin keyword file.

## ➤ Modeling Commands

The Modeling Commands panel of Force Field Explorer allows launching of most of the Tinker programs. After selecting a routine and configuring its modifying arguments, selecting the “play” button starts the job running. If Tinker will modify the coordinates of the system, Force Field Explorer will automatically connect to the routine and show progress interactively. If the routine completes before Force Field Explorer is exited, the textual results in the log file are loaded into the Logs panel. If Force Field Explorer exits while one or more routines are running, they continue in the background unless explicitly killed by the user. For example, the “Optimize” command has been selected for enkephalin (Figure 4).



**Figure 4.** The OPTIMIZE routine has been selected in the Modeling Commands panel and will execute on the active system, in this case enkephalin.

## ➤ Logs

The Logs panel is a simple text editor where output logged from Tinker routines is automatically loaded. It can also be used to edit any text file, for example Tinker coordinate or keyword files.

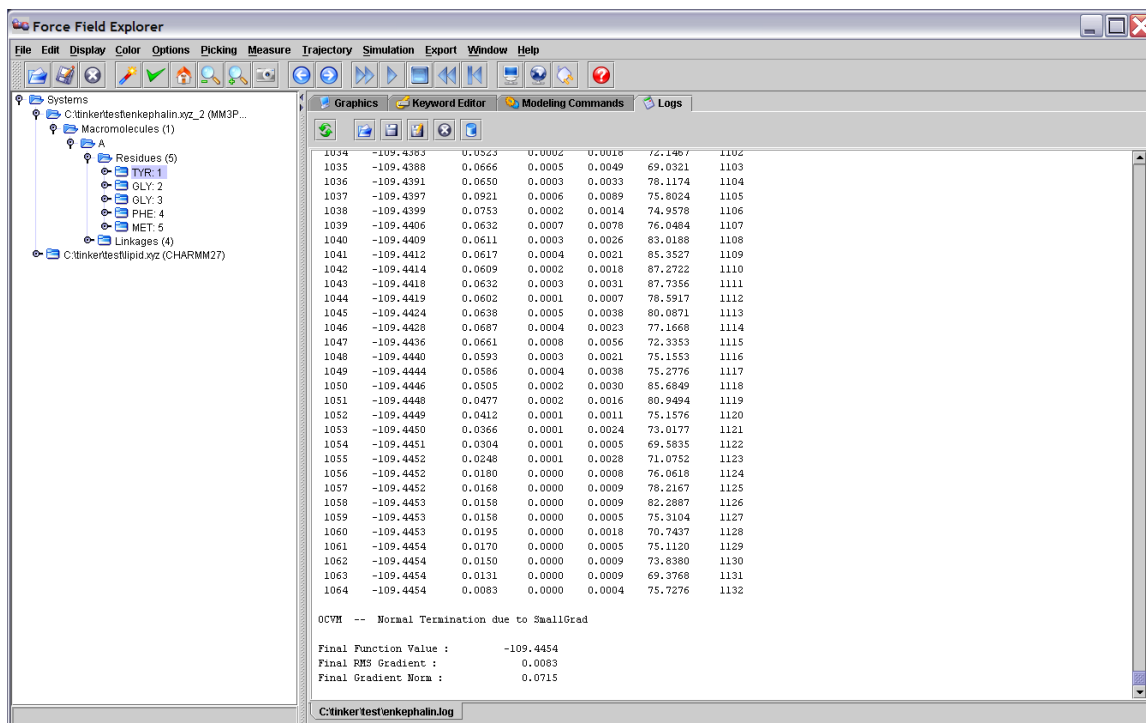
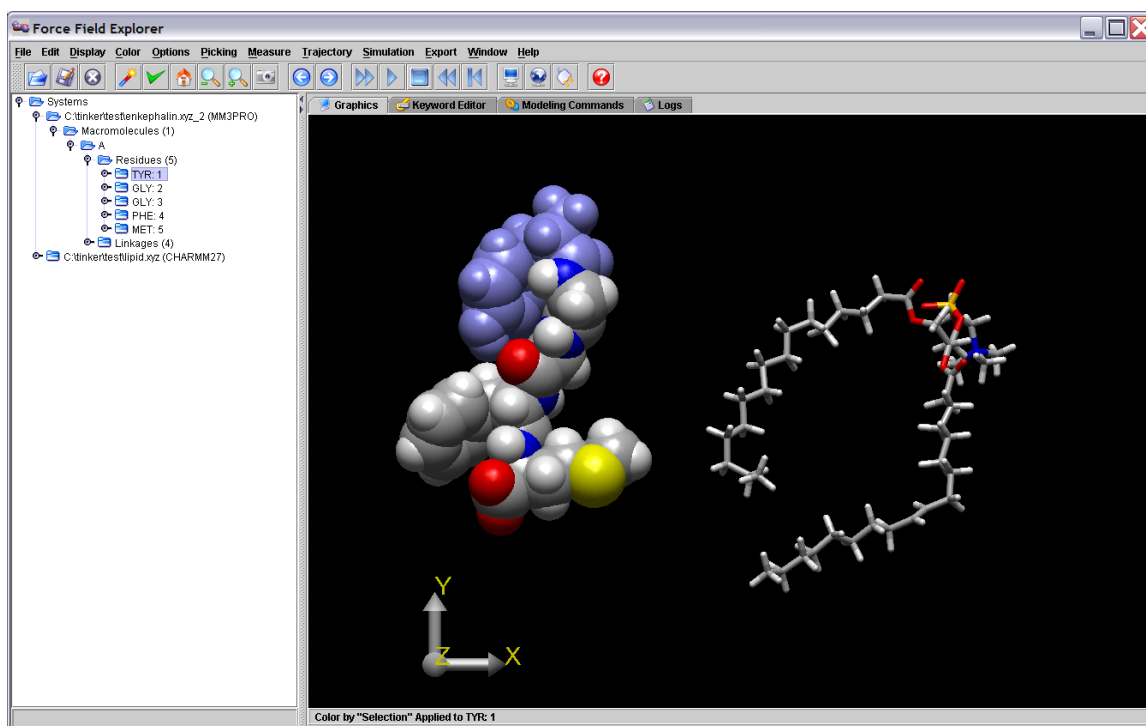


Figure 5. The Log panel shows output logged from a Tinker OPTIMIZE command on enkephalin.

If a modeling command changes the coordinates of an open structure, the final structure generated is re-loaded onto the open structure used to initiate the command.



**Figure 6.** The coordinates for the local minima of enkephalin (enkephalin.xyz\_2) were loaded onto the open structure (enkephalin.xyz) used to launch the Tinker OPTIMIZE command.

## Description of Force Field Explorer Menus

### ➤ File

Force Field Explorer currently reads Tinker coordinate files (\*.xyz, \*.int), restart files (\*.dyn), archive files (\*.arc), induced dipole files (\*.u) and Protein Databank files (\*.pdb). However, file writing has only been implemented for Tinker Cartesian coordinate files.

- ◆ Open  
An attempt is made to open the selected file. Currently, Tinker coordinate files, Archive files, and Protein Databank files are recognized.
- ◆ Save As  
Saves the active file under a different name. (This command is currently only supported for Cartesian coordinate Tinker files)
- ◆ Close  
Close the active file.
- ◆ Close All  
Close all open files.
- ◆ Download from PDB  
Entering a valid 4 character accession will download the corresponding PDB file, save it to the current Force Field Explorer working directory, then open it.
- ◆ Load Restart Data  
Tinker Restart files (\*.dyn) contain atomic positions, velocities and two sets of accelerations (current and previous step), but no connectivity information. Loading a Restart file on top of an open Tinker coordinate file allows visualization of velocities and accelerations.
- ◆ Load Induced Data  
Tinker Induced Dipole files (\*.u) contain induced dipole vectors. They are produced during a molecular dynamics routine using the Tinker “save-induced” keyword. Loading an Induced Dipole file on top of an open Tinker coordinate file allows visualization of induced dipoles.
- ◆ Exit  
Exit shuts Force Field Explorer down, saving user preferences.

### ➤ Selection

The set of nodes currently selected are highlighted in the Molecular Tree. If the shift key is pressed while clicking on two nodes, all nodes in between are selected.

Alternatively, by holding down the control key while clicking on a node, either in the Tree or Graphics window, the selection state of a node can be toggled. To use Graphics based picking, the Graphics Picking checkbox under the Picking menu must be checked.

- ◆ **Select All**  
All open systems are selected.
- ◆ **Restrict to Selections**  
Nodes that are not selected are made invisible.
- ◆ **Highlight Selections**  
Selected nodes are highlighted in the Graphics window.
- ◆ **Set Selection Color**  
Choose the color for selected atoms.
- ◆ **Label Selected Atoms**  
Selected atoms are labeled by number and description.
- ◆ **Label Selected Residues**  
Selected residues are labeled by their respective three letter identifiers.
- ◆ **Set Label Font Size**  
The default label size is 12 point.
- ◆ **Set Label Font Color**  
The default font color is white.

## ➤ **Display**

We have intentionally maintained a simple, but elegant rendering mechanism. The Force Field Explorer data structure is self-rendering, meaning that each object “knows how to draw itself”. Rendering commands are “Top-Down”, meaning that commands filter down through the molecular tree, with each node responding and/or passing commands to its children. This paradigm positions Force Field Explorer to easily scale up to multi-level molecular engineering/nanotechnology modeling projects. What we want to avoid is a rendering/data architecture built upon “an array of atoms”. In our opinion, “an array of atoms” infrastructure can not achieve our molecular engineering design goals. While a graphics change is being rendered, one additional graphics command will be cached. Other commands are ignored while the 3D view catches up. Changes are applied to all selected nodes in the Molecular Tree View.

- ◆ **Wireframe**

- ◆ Tube  
Slow for large systems (more than a few thousand atoms).
- ◆ Spacefill
- ◆ Ball & Stick  
Slow for large systems (more than a few thousand atoms).
- ◆ Invisible
- ◆ RMIN  
Similar to Spacefill, but the sphere radii are set to the Lennard-Jones minima for the given atom.
- ◆ Fill  
Fill rendered polygons.
- ◆ Points  
Render only vertices.
- ◆ Lines  
Render edges between vertices.
- ◆ Preferences – Radius  
A scale factor applied to all rendered spheres and cylinders.
- ◆ Preferences – Wireframe Thickness  
This specifies the thickness of wireframe representations in pixels.
- ◆ Preferences – Detail  
Changes the number of vertices used in creating spheres and cylinders. More vertices (a higher number on the slider) create a smoother appearance, but slower rotations.

➤ **Color**

- ◆ Monochrome  
Black & White rendering.
- ◆ CPK  
Atom based colors.
- ◆ Residue  
Color based on amino/nucleic acid.
- ◆ Structure



Color based on secondary structure specified in PDB files.

- ◆ **Polymer**  
A different color is assigned to each polymer.
- ◆ **Partial Charge**  
Coloring is based on partial charges that correspond to atom types specified in Tinker coordinate files.
- ◆ **Vector Magnitude**  
Coloring is based on vector magnitude, where the vector may represent velocity, acceleration, induced dipole or force depending on user choice.
- ◆ **User Color**  
Arbitrary colors can be assigned to selected atoms by choosing the “Apply User Color to Selections” menu item. The “User Color” can then be selected to invoke this scheme.
- ◆ **Apply User Color to Selections**  
See Above.
- ◆ **Set User Color**  
Specify the color to use when selecting the “Apply User Color to Selections” option.

➤ **Options**

- ◆ **Active System**  
Coordinate controls for the active system.
  - **Reset Rotation**  
Removes any rotations applied to the active system.
  - **Reset Translation**  
Removes any translation applied to the active system.
  - **Reset Rotation and Translation**  
Removes any rotation/translation applied to the active system.
  - **Rotate About Center of Mass**  
Specifies the active system should be rotated about its center of mass.
  - **Reset About Pick**  
Specifies the active system should be rotated about the node selected by graphics picking.
- ◆ **Drag**  
Specify which system is controlled by mouse clicking/dragging within the Graphics window.
  - **Active System**  
Regardless of mouse position, the Active system is controlled.

- System Below Mouse  
To move a system, it must be picked by clicking over it with the mouse.
- ◆ Reset Global Zoom  
Reset the global zoom that has been applied to the entire scene.
- ◆ Reset Global Translation  
Remove any global translation that has been applied to the entire scene.
- ◆ Reset Global Rotation  
Remove any global rotation that has been applied to the entire scene.
- ◆ Reset Global View  
Remove any global rotation and translation, then reset the global zoom.
- ◆ Toggle Hydrogens  
Show/Hide hydrogen atoms.
- ◆ Full Screen  
Make the graphics window fill the entire screen.
- ◆ Set Background Color  
Change the color of the graphics window background. This is useful for switching to a white background before capturing images that might be printed.
- **Picking**  
Graphics picking can be used to select nodes anywhere in the structural hierarchy. By holding the control key while picking, the selection state of the picked node is toggled between selected/not selected. However, holding the shift button down while picking currently has no effect.
- ◆ Graphics Picking  
Selecting this checkbox turns on Graphics Picking.
  - Atom  
Individual atoms will be picked.
  - Bond  
A Bond will be picked, with consecutive clicks cycling through all Bonds made by the picked atom.
  - Angle  
An Angle will be picked, with consecutive clicks cycling through all Angles made by the picked atom.
  - Dihedral  
A Dihedral will be picked, with consecutive clicks cycling through all Dihedrals made by the picked atom.
  - Residue
  - Polymer

- Molecule
- System
- Measure Distance  
After selecting two atoms the distance between them will be reported in the Force Field Explorer console.
- Measure Angle  
After selecting three atoms the angle formed between them will be reported in the Force Field Explorer console.
- Measure Dihedral  
After selecting four atoms the dihedral formed between them will be reported in the Force Field Explorer console.

- ◆ Set Graphics Picking Color  
Picked nodes will be highlighted in the color selected using this control.

### ➤ **Trajectory**

Tinker trajectories are stored in Archive files (\*.arc), which are simply a concatenation of coordinate files (\*.xyz, \*.int).

- ◆ Oscillate  
When the end of a trajectory is reached, it is played in the reverse direction instead of restarting at the beginning.
- ◆ Frame  
Advance to an arbitrary frame of the active trajectory.
- ◆ Speed  
Choose a frame rate for trajectory playback. If 20 frames per second is entered, for example, a delay of 50 msec between coordinate changes is enforced. Therefore, the actual frame rate will be slower than what is specified if rendering for the system is slow.
- ◆ Skip  
Instead of displaying every frame during trajectory playback, only every nth frame will be rendered.
- ◆ Play  
Play the active trajectory.
- ◆ Stop  
Stop the active trajectory.
- ◆ Step Forward  
Advance the active trajectory one frame.
- ◆ Step Back

Rewind the active trajectory one frame.

- ◆ **Reset**  
Return the active trajectory to the first frame.

➤ **Simulation**

Tinker sampling and optimization methods are configured to start a server that listens for Force Field Explorer clients. Once a client – server connection is made, simulation information can be sent between Tinker and Force Field Explorer. Multiple Force Field Explorer clients can connect to the same Tinker simulation.

- ◆ **Release Job**  
If Force Field Explorer is connected to a Tinker simulation, the connection will be closed.
- ◆ **Connect to Local Job**  
Force Field Explorer will attempt to connect to a Tinker simulation executing on the current computer.
- ◆ **Connect to Remote Job**  
Force Field Explorer will attempt to connect to a Tinker simulation executing on a remote computer.
- ◆ **Set Remote Job Address**  
Specify the IP address of the remote computer where a Tinker simulation is executing. No domain name server is used, so the address should be of the form: XXX.XXX.XXX.XXX

➤ **Export**

Currently, Force Field Explorer can save screenshots uses JPEG and PNG formats. More formats will be supported when we target Java 1.5 (this release targets Java 1.4.2). In most cases, PNG gives better image quality when using Force Field Explorer than JPEG, probably because the default JPEG configuration we are using chooses small image size over preservation of detail.

- ◆ **Capture Graphics**  
Capture the Graphics window to an image file.
- ◆ **PNG**  
Use the PNG image format.
- ◆ **JPEG**  
Use the JPEG image format.

➤ **Window**

Force Field Explorer components can be customized to some extent to suit user preferences. Many user configurable choices are saved between sessions.

- ◆ **Reset Panes**  
This resets the slider between the Molecular Tree and Graphics Windows to the default position. The Graphics window is a heavy weight component (so hardware graphics acceleration can be used), while most Force Field Explorer components are light weight “Swing” components. Unfortunately, this effect prevents the user from dragging the slider and shrinking the Graphics window.
- ◆ **Show Tree**  
Show/Hide the Tree view.
- ◆ **Show Tool Bar**  
Show/Hide the Tool Bar.
- ◆ **Show Global Axes**  
Show/Hide the Global Axes. The Global Axes are used both as a visual cue and to affect global rotations and translations.
- ◆ **Show Console**  
Show the command line Console.
- ◆ **Java Metal Look & Feel**  
This is the default appearance and should be consistent across platforms.
- ◆ **Windows/Macintosh/Motif Look & Feel**  
This appearance should cause Force Field Explorer to more closely resemble the native platform.

➤ **Help**

- ◆ **About**  
This displays the Tinker logo and contact information.

## Acknowledgments

The original version of Force Field Explorer was written by Michael Schnieders, before and during his graduate school stay in Jay Ponder's laboratory at Washington University in St. Louis. The code is now being developed and maintained by the Ponder group.

A significant contribution to Force Field Explorer was made by Zhiguang "Frank" Gao over the summer of 2002. The Force Field Explorer logo was provided by Pengyu Ren and shows an optimized AMOEBA gas phase water dimer. Special thanks to Alan Grossfield for offering many helpful suggestions. We would also like to thank Eric Reiss for making available his modified version of some Java3D Behaviors and Pat Niemeyer for his work in developing the BeanShell scripting framework. Important code modernization and updating of FFE was done over the period from 2013 to 2016 by Jeffrey Bigg, Tyler Ponder and Brendan McMurrow.

## Reporting Bugs

We apologize in advance for any bugs that remain in Force Field Explorer. Should you happen to perform some command that causes a Java stack trace to be dumped to the console, please copy the output and forward to [ponder@dasher.wustl.edu](mailto:ponder@dasher.wustl.edu). Poor video card drivers can sometimes result in unpredictable Force Field Explorer behavior. If this should happen, try to find the latest drivers for your platform/video card combination.